

W2P

SOLFLEX 350



The desktop
production units!



Dimensions: 15.74 × 15.74 × 21.46 in
Maschinengröße: 400 × 400 × 545 mm

Print Volume: 2.52 × 4.72 × 5.12 in*
Bauvolumen: 64 × 120 × 130 mm*

Layer Thickness: 0.001–0.008 in
Schichtdicke: 25–200 µm

Pixel Size: 0.0020 in*
Pixelgröße: 50 µm*

Technology: UV-LED DLP®,
Wavelength: 385 nm
Technologie: UV-LED DLP®,
Wellenlänge: 385 nm

Weight: approx. 44 lbs
Gewicht: ≈ 20 kg

Operating Temperature: 64–82° F
Umfeldtemperatur: 18–28° C

Power Requirements: 100–240V,
50/60Hz, 80 W
Netzanforderung: 100–240V,
50/60Hz, 80 W

Building Speed: 4.72 in/hr**
Baugeschwindigkeit: 120 mm/Std.**



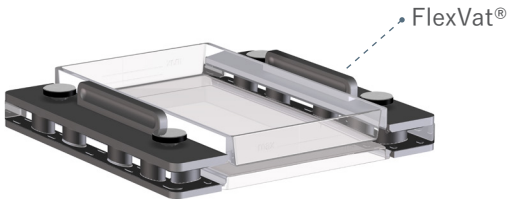
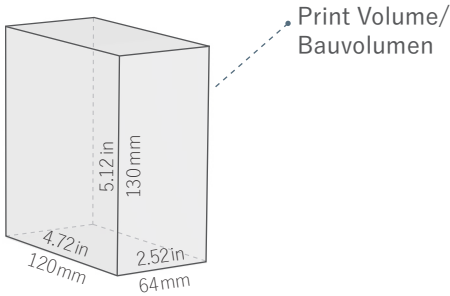
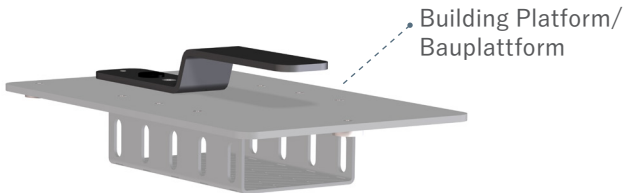
Vat Deflection Feedback System
saves up to 40% of manufacturing time

* Pixel Size and Print Volume may vary/Pixelgröße und Bauvolumen können geringfügig abweichen

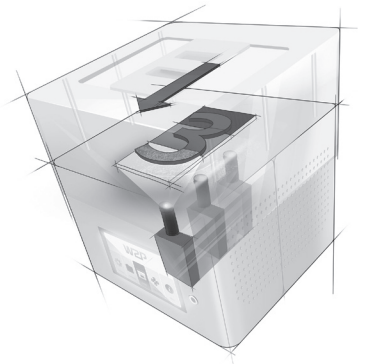
** Layer Thickness: 200 µm, BuildStyle: Normal/Schichtdicke: 200 µm, BuildStyle: Normal

W2P

SOLFLEX 350



Moving DLP®



W2P Engineering GmbH

Am Campus 1
3400 Klosterneuburg | Austria
www.way2production.at

Contact

Phone: +43 (0) 1 306 28 57

E-Mail: office@way2production.at